

# Crime Mapping News



A Quarterly Newsletter for GIS, Crime Mapping, and Policing

Volume 4 Issue 4  
Fall 2002

## Inside this Issue

<b>Overview: Community Mapping, Planning, &amp; Analysis for Safety Strategies</b> .....	1
<b>Contacting the Crime Mapping Laboratory</b> .....	2
<b>The Seattle COMPASS Project Privacy Council</b> .....	2
<b>Next Issue</b> .....	5
<b>The Milwaukee COMPASS Project</b> .....	5
<b>Memphis, TN Community Safety Information System</b> .....	8
<b>The East Valley COMPASS Project</b> .....	9
<b>Upcoming Conferences and Training</b> .....	10
<b>Office of Community Oriented Policing Services (COPS) on the Web</b> .....	11
<b>About the Police Foundation</b> .....	12

The topic of this issue of the *Crime Mapping News* is the National Institute of Justice (NIJ) program entitled “Community Mapping, Planning, and Analysis for Safety Strategies” (COMPASS). The articles in this issue cover topics including 1) an overview of the COMPASS project from NIJ’s perspective; 2) a discussion of data confidentiality and privacy concerns addressed by the Seattle, Washington, COMPASS site; 3) an overview of various collaborative problem-solving efforts supported by the COMPASS initiative in Milwaukee, Wisconsin; and 4) an introduction to the East Valley, California, COMPASS project, which began earlier this year. Also included in this issue is a brief review of the Community Safety Information System (CSIS) in Memphis, Tennessee.



## Overview: Community Mapping, Planning, & Analysis for Safety Strategies

by Erin Dalton

Former National Institute of Justice Social Science Analyst

*...Autos are stolen in the city and stripped in the county.*

*...Communities and police do not know when offenders are returned home.*

*...A new substance abuse clinic is under-utilized—most patients must take three different buses to get there.*

Criminals do not respect traditional boundaries. They do not care that the police department cannot communicate with the county sheriff, that the corrections department and police department do not share data, that the service providers do not have access to the information held by the department of transportation. However, the knowledge to inform solutions to community problems comes from many different agencies and community partners. COMPASS (Community Mapping, Planning, & Analysis for Safety Strategies) seeks to bring information, analytical capacity, and people together to address these problems. Launched in 2000, the COMPASS model has four components:

1. A collaborative policy group spanning a broad array of city agencies and community interests to guide the initiative and develop public safety strategies.
2. A comprehensive, citywide data infrastructure consisting of data collected from a variety of sources (crime incident, public safety, demographic, social, environmental, and school data).
3. Strategic analysis of data both spatially and temporally to identify and target public safety problems and to guide the development of interventions.

To view the *Crime Mapping News* in full color, visit the Police Foundation or COPS Office Web sites at:

[www.policefoundation.org](http://www.policefoundation.org)  
or  
[www.cops.usdoj.gov](http://www.cops.usdoj.gov)

4. A research partner to support the development of the data infrastructure; analyze data to identify public safety problems; aid the development of research-based interventions; and provide ongoing feedback and documentation of the outcomes and impacts of interventions.

COMPASS is managed by the National Institute of Justice, with support from Office of Justice Programs partners, especially the Bureau of Justice Statistics and the Office for Community Oriented Policing Services. Three COMPASS pilot sites have been funded to date: Seattle, Washington (2000); Milwaukee, Wisconsin (2001); and East Valley, California (2001). From the many jurisdictions that expressed interest in COMPASS, NIJ sought sites that reflected different local conditions and a variety of levels of local experience with data integration, community partnership, and data-driven problem solving. Therefore, from these sites, we have a rich set of lessons to disseminate to communities attempting to implement the COMPASS model with local funding. These lessons are expected to be available in the next year to sixteen months.

*This article was authored by Erin Dalton, former Social Science Analyst with the National Institute of Justice. For additional information about COMPASS, see the National Institute of Justice Web site at [www.ojp.usdoj.gov/nij/compass/welcome.html](http://www.ojp.usdoj.gov/nij/compass/welcome.html).*

### Contacting the Police Foundation Crime Mapping Laboratory:

By Phone: (202) 833-1460  
 By Fax: (202) 659-9149  
 By E-mail: [pmaplab@policefoundation.org](mailto:pmaplab@policefoundation.org)  
 By Mail: 1201 Connecticut Avenue, NW  
 Suite 200  
 Washington, DC 20036

Also, feel free to contact individual Crime Mapping Laboratory staff with questions or comments.

Rachel Boba, PhD, Director

Mary Velasco, Research Associate

Greg Jones, Graduate Research Intern

## The Seattle COMPASS Project Privacy Council

by Gerard "Sid" Sidorowicz  
Seattle COMPASS Project Director

When the City of Seattle accepted the award of a COMPASS grant from the National Institute of Justice, several citizens and City Council members expressed concerns regarding the confidentiality of information intended to be used by the project. In addition, they wanted a means of ensuring that the process of combining disparate data sources would not impinge on the privacy of citizens. As a result, the City Council directed the creation of a Privacy Council to monitor the collection of data by COMPASS staff (see sidebar on next page). The process of presenting data requests to the Privacy Council, and the subsequent discussion these requests have generated, are instructive to other jurisdictions that are contemplating a similar public safety problem-solving approach.



### What Is The Problem?

Confidentiality of information and citizen privacy concerns are not wholly synonymous concepts. Confidentiality is a construct of legal and regulatory constraints on the release of specific personal information. Health records fall under such restrictions. The unlawful release of personal medical information can lead to civil and criminal penalties. Privacy is a broader concept, related to the desire of persons to be left alone in their private lives and the expectation that information provided to the government is used only for specific purposes. For example, citizens often resent when information about them that is already in the public domain is used for commercial purposes. Since the goals of COMPASS envisioned the potential use of sensitive, confidential information and the use of data for purposes not expected by citizens when they

*This project is supported by a grant awarded by the National Institute of Justice. Points of view in this document are those of the author and do not necessarily represent the official position or policies of the U.S. Department of Justice.*

provided the information, the Seattle City Council embraced this broader concept.

### **The Seattle COMPASS Privacy Council**

The Privacy Council has three members and is supported by the City Attorney's Office and COMPASS staff. The Privacy Council includes a City Council member, the Mayor's Senior Policy Advisor for Public Safety and Human Services, and an attorney who has extensive experience in public defense and has been a member of Human Subjects Review Boards. The Council meets in sessions open to the public on dates advertised well in advance.

Early in their deliberations, the Council adopted a standard format for the review of data requests. These requests include the following information:

- The data provider
- A general description of the data
- Availability of the data to the general public
- Specific details of data elements
- Identification of those data elements that are confidential and the authority for the confidentiality
- Proposed protections of the data by COMPASS staff

### **Public Disclosure and Data Protection**

Many of the initial concerns expressed about COMPASS related to the misuse of data by public agencies. However, it quickly became clear that equal thought should be given to access of the COMPASS database by members of the general public including the press, commercial enterprises, and individuals seeking personal information about others. Because COMPASS is a project of a public agency, it is subject to Washington State Public Disclosure Law as well as the Federal Freedom of Information Act. Any data collected and held by COMPASS could be subject to disclosure unless otherwise protected by law.

Seattle and the National Institute of Justice rejected an approach that would have protected all COMPASS data from disclosure under the umbrella of a research exemption. Research data are typically destroyed or limited in use once the goals of the project are achieved. The purpose of COMPASS, on the other hand, is repeated use of the data for problem solving in ways that may not have been anticipated. For that reason, staff focused early on the details of the legal and regulatory restrictions that accompany certain data sets in order to retain flexibility without putting agency client information at risk.

One of our first lessons was that agencies are not always aware of the confidentiality requirements and disclosure laws that govern their data. An agency was willing to share data with COMPASS staff that were clearly not releasable to the general public. When COMPASS staff pursued additional clarification, the agency's legal advisors suggested that we were not one of the exempted groups that could receive and use these data. Hence, had we accepted the data, the sending agency might have violated state and federal regulations. The questions we put to potential data providers are these:

- Are any of the data you propose to give us prohibited from release by law?
- If so, do you have discretion to provide data to exempted agencies?
- Does COMPASS fit those exemptions?
- Does the confidentiality and exemption from release follow the data to COMPASS?
- It is often not sufficient to rely solely on interagency agreements that direct COMPASS not to release personally identifiable data to third parties. Given the

*Whereas the integration and analysis of information from many sources has the potential to be a powerful tool for the City and the community in solving major public safety problems; and*

*Whereas the integration of information, if not conscientiously managed, could increase access to information in a way that reduces citizens' privacy...*

*There shall be a COMPASS Privacy Council...Prior to the collection of information by COMPASS, the COMPASS Privacy Council shall review the specific plans for information collection and management. (T)he COMPASS Privacy Council shall determine the legal requirements for confidentiality and privacy of all information that COMPASS proposes to collect... The COMPASS Project Director shall implement measures to meet applicable legal requirements.*

*The COMPASS Privacy Council shall determine whether meeting the legal requirements for confidentiality and privacy of the specific information will adequately protect citizen's privacy, or whether additional protections are warranted and feasible.*

**- Seattle City Council Resolution #30178**

liberal interpretation of Washington State's Public Disclosure Laws, public requests for data must be honored unless specifically exempted. Detailed information about exemptions is therefore critical.

In some cases, personally identifiable information has been provided to COMPASS, within the parameters allowed by law, but its display and use is limited. We are able to collect booking information from the county jail, for example, but cannot show point locations of the individuals in the files. Since they have not yet been charged and found guilty, personal information about them is not releasable. However, in this case, COMPASS was found to fit within the exemptions of an agency that could receive such data. We have also arranged to collect information from agencies where we exchange personal identifiers with substitutes allowing us to link files without possessing an individual's name or address. In this case, the Privacy Council raised questions about the ability of individuals to request, through disclosure laws, both the files containing unidentifiable information and the algorithm used to create substitute identifiers. Caution should be taken to ensure that such a linkage cannot take place.

#### **Inferential Disclosure – The Problem of Small Numbers**

Two related issues have to do with geographic areas with small client counts and the ability to combine data requests to allow for inferential disclosure. In the first case, we may find that presenting tables or choropleth maps for small areas could allow identification of clients within the area. For example, showing juveniles by census tract who have been arrested and found to have a substance abuse problem could reveal to some members of a problem solving group the identity of the youths. The COMPASS Privacy Council adopted a set of data suppression

guidelines that require obscuring data when client counts are low in any particular area.

The second issue is more difficult to control externally. Care must be taken to ensure that the combination of separate data sets does not allow for the identification of individuals where prohibited. COMPASS staff can ensure, using data suppression rules, that these cases are avoided. More problematic can be public disclosure requests for individual data sets that are then inappropriately combined by the requestor.

#### **Client Consent For Use of Data**

Finally, the Privacy Council debated the effects of using data collected freely from individuals for unintended uses. Clients often consent to giving personal information with the expectation that its use will be limited. In some cases, clients provide information that could lead to policies and actions that place them at risk. For example, survey information from offenders about how their substance abuse affected their criminal behavior could lead to changes in police tactics. The offenders surveyed could subsequently find themselves "harmed" by these tactics. The Privacy Council, with the help of NIJ staff, discussed these issues.

"Research data are typically destroyed or limited in use once the goals of the project are achieved. The purpose of COMPASS, on the other hand, is repeated use of the data for problem solving in ways that may not have been anticipated. For that reason, staff focused early on the details of the legal and regulatory restrictions that accompany certain data sets in order to retain flexibility without putting agency client information at risk."

#### **Lessons Learned**

1. Take privacy and confidentiality issues seriously. COMPASS staff have shown as much sensitivity to these issues as our critics have. As a result, concerns have diminished.
2. Get the details of confidentiality requirements. If data providers are not confident they can trust you to protect their clients when it is required, they will not participate. In addition, you do not want to find yourself having to release information that you promised your partner agency would be protected.
3. Think big picture. Make sure to have tools in place that ensure you will not inadvertently impinge on privacy by the presentation of combined data.

*Note from the Editors: The opinions expressed in these articles are those of the authors and do not necessarily reflect the views of the Police Foundation or the COPS Office. In addition, only light editing has been made to the articles in order to keep each author's voice and tone.*

4. Think about consequences on clients and agencies. Use of data for unintended purposes may have a chilling effect on future clients' willingness to provide personal information or to participate in programs. Talk this through with your data providers.
5. Be creative in overcoming barriers. Often, agencies protect entire data sets from release when only specific variables are confidential. Work with your partners to protect their clients' interests while gaining the greatest possible access to data.
6. Ask for help. The City Attorney's Office, NIJ, and our research partners have been valuable in helping us work through these issues. We have asked other interested parties for advice and they have sparked some engaging discussions.
7. Have an open door to the public. Problem solving efforts like these are sensitive and use information that concerns citizens. Since the goal of COMPASS is to use data to inform and engage the public in problem solving, we should conduct our business openly.

*This article was authored by Gerard "Sid" Sidorowicz, the COMPASS Project Director located in the Department of Neighborhoods in the City of Seattle. He can be contacted via e-mail at sid.sidorowicz@seattle.gov. The Seattle COMPASS Web site is: [www.cityofseattle.net/planning/compass/default.htm](http://www.cityofseattle.net/planning/compass/default.htm).*

## NEXT ISSUE

We would like to solicit article topics for the next issue of the *Crime Mapping News* from our readers. Please send us suggestions for crime analysis and/or mapping topics that are of interest to you or that you would like to see addressed by your colleagues.

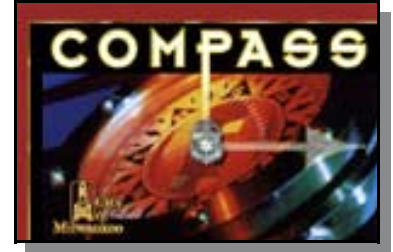
If you would like to send topic ideas or contribute an article to a future issue, please contact the Crime Mapping Laboratory at:

[pfmaplab@policefoundation.org](mailto:pfmaplab@policefoundation.org)  
or (202) 833-1460

## The Milwaukee COMPASS Project

by Jim Pingel  
COMPASS Project Director

In choosing Milwaukee as the second COMPASS site, the National Institute of Justice (NIJ) cited "its track record of collaborative problem solving and its expertise in using geographic information systems...to inform policy and practice."\* Milwaukee's COMPASS initiative combines the two—leveraging the technical and analytical capacity in place in this community to strengthen the existing array of collaborative initiatives and partnerships.



The Milwaukee COMPASS team is composed of a Policy Director in the Mayor's Office, three technical positions in the Geographic Information Systems (GIS) Section of the City's Information Technology Management Division (ITMD), and a strong, diverse group of researchers. This research team is directed by the University of Wisconsin (UW) Milwaukee's Center for Urban Initiatives and Research (CUIR), and it includes criminologists, geographers, and other faculty and staff. The Non-Profit Center of Milwaukee and the Firearm Injury Center at the Medical College of Wisconsin are also valuable research partners.

The support and leadership of Milwaukee's Mayor, John Norquist, has been invaluable to the project. Mayor Norquist's ability to rally city departments, community and faith-based leaders, and the media around his vision of "citizens running government" through the use of Internet technologies has given COMPASS—and the GIS community in general—a much higher profile from which to generate broad support and participation.

### **Empowering the Community through Public Access to Data**

Given the strong grassroots interest in using and analyzing data and the history of successful public-non-profit partnerships, the first objective of Milwaukee's COMPASS project was to leverage the team's considerable GIS expertise and capacity into expanded public access to data. The team's first accomplishment

\* National Institute of Justice. (2001, August). *National Institute of Justice Annual Report to Congress: 2000* (p. 18). Washington, DC: U.S. Department of Justice, Office of Justice Programs.

was a “Community Mapping” Web site using the Environmental Systems Research Institute’s (ESRI) Internet Map Server (IMS). The site ([www.milwaukee.gov/compass](http://www.milwaukee.gov/compass) - Community Mapping button) lets users create their own maps, accessing public data from key city departments (police, fire, neighborhood services, health) as well as the Milwaukee Public School District. The city’s COMPASS technical staff have also developed a query and download capability that allows users to download entire data sets for user-defined geographic areas.

### Collaboration in Milwaukee

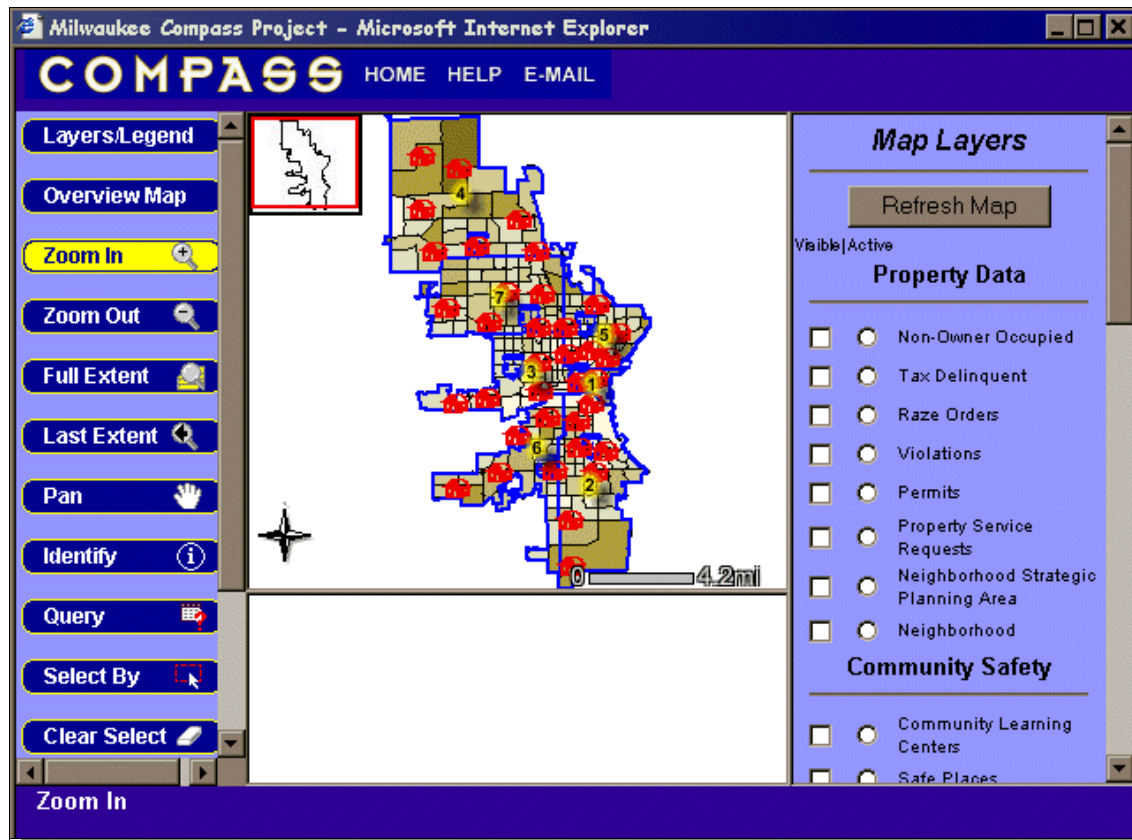
The next step was to aggressively demonstrate to existing collaborations the value of putting shared data to work. COMPASS has focused on filling an increasingly important niche: providing data-driven analysis, planning, and evaluation to support partnerships and collaborative initiatives that (a) span multiple institutions—public, private, and non-profit; (b) cut across policy areas and/or organizational “silos”; and (c) do so because the partners in the initiative recognize the complex, multi-dimensional nature of problems facing Milwaukee’s neighborhoods.

Many examples of “collaborative problem-solving” in Milwaukee are familiar to other jurisdictions: Weed & Seed; a CEASEFIRE gun prosecution initiative patterned after Richmond, Virginia’s Project Exile (and now expanding to address the objectives of Project Safe Neighborhoods); and nuisance abatement activities through which the city attorney, residential building inspectors, and vice detectives initiate civil actions against landlords who allow drug dealing on their properties. In addition, the Mayor has convened a diverse Commission on Crime to take a holistic look at crime and policing in Milwaukee and develop recommendations for improvement.

The COMPASS team has worked hard to demonstrate the value that shared data can add to initiatives like these and others that cut across housing, economic development, social services, education, or other policy areas. The following are a few other examples:

- *School Safety.* COMPASS research partners are working with the School Safety Council, a task force convened by the Milwaukee Public School District, to develop more strategic, collaborative approaches

*The COMPASS “Community Mapping” Web application: an ESRI IMS tool that allows users to create their own maps incorporating shapefiles depicting crime and other community risk and protective factors.*



to ensure the safety of schools and kids. COMPASS research partners will incorporate neighborhood-level COMPASS data, incidents reported inside schools, and observational data from the Community Partners neighborhood organizers in a more comprehensive, school/neighborhood problem-solving effort.

- *Domestic Violence.* In an example of federal demonstration projects supporting each other, COMPASS GIS staff provide maps of domestic violence incidents and arrests to Milwaukee's Judicial Oversight Initiative Office. In forging a new partnership with the local Task Force on Domestic Violence, COMPASS is beginning to advise the entire community on better data management and sharing between advocates and the criminal justice community.
- *Safe & Sound, Inc.* This non-profit organization runs over 70 Safe Sites for after-school and summer youth activities (which grew from six Weed & Seed-funded Safe Havens) and coordinates with the Community Partners and the local HIDTA initiative. Safe & Sound contracts with COMPASS for mapping and analysis of crime trends in 21 service areas.

### Community Input: "The Killer App?"

The most innovative work of Milwaukee's COMPASS project to date has been in support of the Citywide Housing Coalition. This is a partnership between the city's Department of Neighborhood Services (DNS) and several community-based organizations (CBOs). The CBOs conduct a "windshield" survey every spring of the houses in their areas that are most in need of repair and/or generating the most public safety concerns. They send letters to the owners (more often than not absentee landlords), and refer those who do not comply with their request to remedy the properties' problems to DNS for intensive building code enforcement (condemnation, ultimately, for the worst properties that are not addressed).

COMPASS used an innovative combination of Java and GIS technologies to streamline their data entry process, and at the same time create a more valuable, geocoded set of analytic data. CBOs log onto a password-protected site on the COMPASS Web site (each group has its own account). As they enter addresses and survey information, the Web server checks the city parcel file to verify that the address is valid. The application then attaches city data on the

owner, tax status, violations, and other data for that property to the record. Finally, when all records are entered, the user at the CBO literally hits a button to get an entire spreadsheet linking survey information and city data. A few more keystrokes generate all of the letters to be sent to property owners.

Strategically, this is COMPASS' initial foray into translating the knowledge of community organizers—who presumably know their own neighborhoods best—into tangible, geocoded data that can be transposed over such "official" data as drug arrests and building code violations. This is the beginning of making data-sharing a two-way street.

COMPASS is working with Milwaukee's Community Prosecutors, who were originally funded by the Bureau of Justice Assistance (BJA) and are now supported through a local non-profit, as well as the Community Partners, who are the 20-plus community organizers who carry out the "seeding" activities funded by Weed & Seed grants and many other grassroots organizing efforts. These and other groups have street-level knowledge that is invaluable to law enforcement and other government agencies. This knowledge is currently on paper or in the heads of the organizers, so COMPASS is working with them to try to efficiently capture the sometimes subjective "data" that they gather as they visit neighbors door-to-door in the city's most violent, drug-riddled neighborhoods.

### The Future

Milwaukee COMPASS is pursuing an ambitious agenda by reaching out to many different constituencies. This approach has begun to demonstrate across this community the value of GIS and the reliance on analytical problem-solving methods.

By partnering with existing efforts to inform policy-makers with data, geographic analysis, and research, COMPASS has made significant strides toward institutionalizing GIS, not only in the law enforcement community, but as a means of connecting criminal justice agencies to public officials in other policy areas and grassroots community leaders.

The pressing issue for COMPASS right now, with the city's grant funding projected to run out early in 2003, is **sustainability**. The COMPASS team is examining the successful transitions of several SACSI (Strategic Approaches to Community Safety Initiatives) sites to locally-funded, independent initiatives,

*This project is supported by a grant awarded by the National Institute of Justice. Points of view in this document are those of the author and do not necessarily represent the official position or policies of the U.S. Department of Justice.*

especially Winston-Salem, NC; Memphis, TN; Indianapolis, IN; and Rochester, NY.

At the same time, COMPASS, the Non-Profit Center, CUIR, and other institutions are hoping to secure a planning grant to work on tighter collaboration among the data-driven, policy-relevant initiatives in place in Milwaukee (in the interest of space, descriptions of these are forgone, but a list of Web site addresses is provided below). The ultimate vision is a "virtual clearinghouse," which will result in Milwaukee taking another huge step toward shared data and the ability to fuel partnerships and inform policy makers with timely, concise, comprehensive analysis of neighborhood conditions and trends.

#### Milwaukee's Data-Driven Resources

1. The Milwaukee COMPASS Web site:  
[www.milwaukee.gov/compass](http://www.milwaukee.gov/compass)
2. UW Milwaukee CUIR: [www.uwm.edu/dept/cuir](http://www.uwm.edu/dept/cuir)

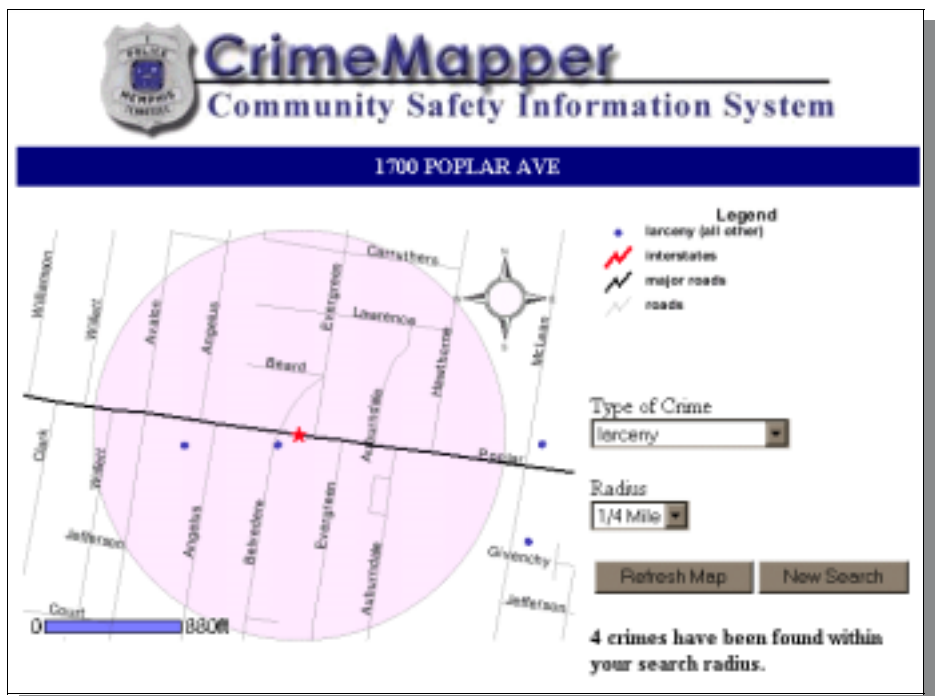
3. The Non-Profit Center of Milwaukee:  
[www.execpc.com/~npcm](http://www.execpc.com/~npcm)
4. The Medical College of Wisconsin's Firearm Injury Center: [www.mcw.edu/fic](http://www.mcw.edu/fic)
5. Map Milwaukee (the technological predecessor to COMPASS): [www.mapmilwaukee.org](http://www.mapmilwaukee.org)
6. Milwaukee's Annie E. Casey Foundation *Making Connections* Initiative:  
[www.connectionsmilwaukee.org](http://www.connectionsmilwaukee.org)
7. The Urban Institute's National Neighborhood Indicators Partnership: [www.urban.org/nnip](http://www.urban.org/nnip)
8. The Center for Urban Population and Health
9. The Employment and Training Institute at UW Milwaukee: [www.uwm.edu/Dept/ETI](http://www.uwm.edu/Dept/ETI)

*This article was authored by Jim Pingel who works in the Office of Mayor John O. Norquist and coordinates and manages Milwaukee's COMPASS Initiative. He can be contacted via e-mail at [jpinge@ci.mil.wi.us](mailto:jpinge@ci.mil.wi.us).*

## Memphis, TN Community Safety Information System (CSIS)

The Community Safety Information System (CSIS), housed at the Memphis Police Department (MPD), was developed with funding from the National Institute of Justice as part of the Strategic Approaches to Community Safety Initiative (SACSI) to provide local stakeholders responsible for law enforcement, courts, prosecution, corrections, and probation and parole with immediate access to information needed to respond to criminal activity and develop appropriate and effective interventions. The CSIS represents a data-sharing agreement among fifteen local agencies. Two outgrowths from CSIS have been the creation by MPD of a community access site for crime data called CrimeMapper ([www.memphispolice.org](http://www.memphispolice.org)) and the development by the University of Memphis' Center for Community Criminology and Research of the Memphis and Shelby County Offender Tracking System (MASCOTS), a relational database with system query, reporting,

graphing, and mapping capabilities for the Tennessee Board of Probation and Parole's Delta District. Further information can be obtained from Professor Richard Janikowski, [rjankwsk@memphis.edu](mailto:rjankwsk@memphis.edu).



## The East Valley COMPASS Project

### Project Overview

Although the East Valley COMPASS project began in early 2002, the work has only just begun as the research partner, the Police Foundation, has recently been selected. Thus, there is not much to report as progress in this newsletter issue. What follows is a brief description of the project taken from the original project proposal and a map depicting many of the agencies involved in this COMPASS initiative.

The mission of the East Valley COMPASS initiative is to link diverse stakeholders and their data systems in a regional collaboration focused on developing coordinated responses to community safety problems. In addition, East Valley will facilitate community problem-solving by creating "Citizen's COMPASS," a Web site that will allow communities to access, via the Internet, databases rich in public safety-related information previously unavailable to the general public.

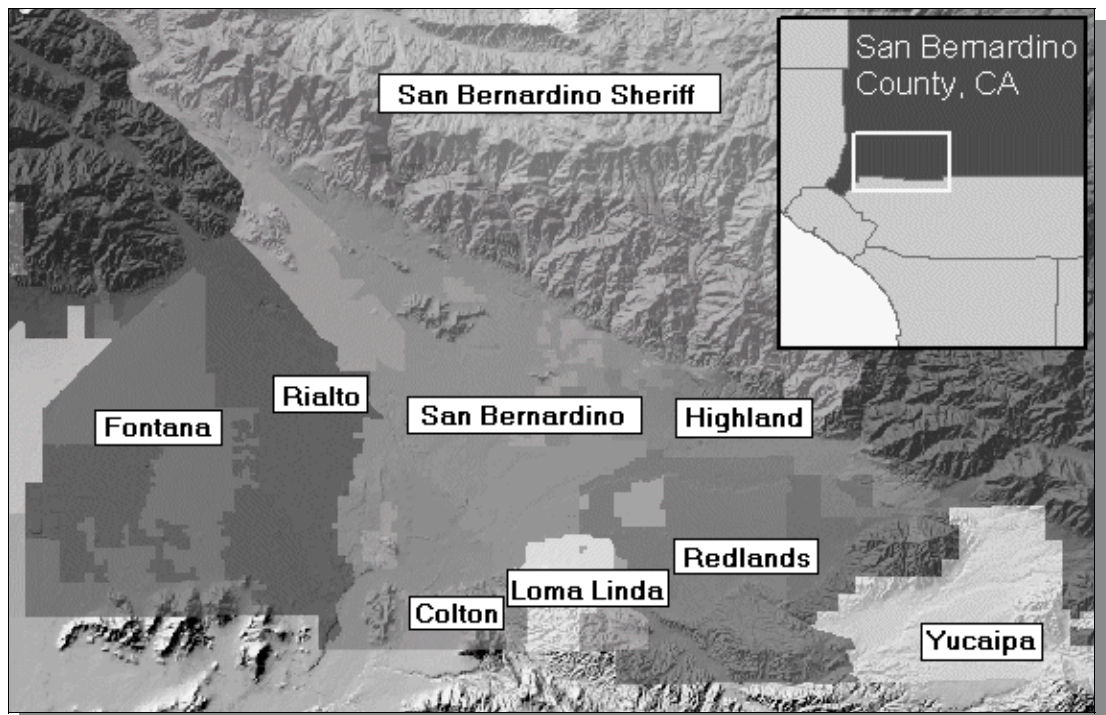
Geographically, the East Valley COMPASS initiative was originally comprised of the city of Redlands, California, in the San Bernardino County; the cities of Highland, Yucaipa, Loma Linda, and San Bernardino; and the unincorporated town of Mentone. Recently, the cities of Colton and Rialto have joined the initiative. Collectively, this region of 350,000 people is known as the "East Valley." In addition, the city of Fontana, with a population of 110,000, is included in the East Valley COMPASS initiative.

East Valley COMPASS partners include: the criminal justice system, local governments, health-

care providers, housing officials, social service providers, schools, community-based organizations, institutes of higher learning, the private sector, the Police Foundation, and the National Institute of Justice. The East Valley COMPASS initiative will be managed by a COMPASS leadership team that will be supported by the COMPASS Project Director. The committee will be comprised of representatives from the initiative partners. This group will help guide the COMPASS project on the inter-organizational and inter-jurisdictional sharing of data, the use of the COMPASS data system, and on working collaboratively to address common public safety problems.

### Contact Information

For more information about the East Valley COMPASS initiative, contact Phil Mielke, COMPASS Analyst at the Redlands Police Department, via e-mail at [pmielke@redlandspolice.org](mailto:pmielke@redlandspolice.org), or Rachel Boba, Director of the Police Foundation's Crime Mapping Laboratory, the research partner, at [rboba@policefoundation.org](mailto:rboba@policefoundation.org).



*The Memphis CSIS and East Valley COMPASS projects are supported by grants awarded by the National Institute of Justice. Points of view in this document are those of the authors and do not necessarily represent the official position or policies of the U.S. Department of Justice.*

## Upcoming Conferences and Training

### November

Rio Hondo GIS/GPS Public Safety Training Center:  
ArcView Training

November 4-8, 2002

Whittier, CA

Contact: Bob Feliciano,  
bfeliciano@riohondo.edu or (562) 692-0921

American Society of Criminology (ASC) 2002  
Annual Meeting

November 13-16, 2002

Chicago, IL

www.asc41.com

MapInfo User Conference 2002

November 17-20, 2002

San Diego, CA

www.mapinfo.com

2002 Problem-Oriented Policing Conference

November 22-24, 2002

San Diego, CA

www.policeforum.org

### December

Sixth Annual International Crime Mapping Research  
Conference

December 8-11, 2002

Denver, CO

<http://www.ojp.usdoj.gov/nij/maps>

### January

Crime Mapping and Analysis Program (CMAP):  
Introductory ArcView Class

January 13-17, 2003

Denver, CO

Contact: Danelle Digiosio,  
ddigiosi@du.edu or (800) 416-8086

Rio Hondo GIS/GPS Public Safety Training Center:  
ArcView Training

January 27-30, 2003

Whittier, CA

Contact: Bob Feliciano,  
bfeliciano@riohondo.edu or (562) 692-0921

### General Web Resources for Training Seminars and Conferences

<http://www.ojp.usdoj.gov/nij/maps>

<http://www.nlectc.org/cmap>

<http://www.nijpcs.org/upcoming.htm>

<http://www.usdoj.gov/cops/gpa/tta/default.htm>

<http://www.cicp.org>

<http://www.iaca.net>

<http://www.ialeia.org>

<http://www.ialep.org>

<http://www.urisa.org>

<http://www.mapinfo.com>

<http://www.esri.com>

<http://www.geospatial-online.com>

<http://msdis.missouri.edu>

<http://magicweb.kgs.ukans.edu>

<http://giscenter.isu.edu/training/training.htm>

<http://www.nsgic.org>

<http://www.alphagroupcenter.com>

<http://www.actnowinc.org>

### Early Reminders!

Crime Mapping and Analysis Program  
(CMAP): Advanced Crime Mapping &  
Analysis

January 29-31, 2003

Denver, CO

Contact: Danelle Digiosio,  
ddigiosi@du.edu or (800) 416-8086

Rio Hondo GIS/GPS Public Safety Training  
Center: ArcView Training

February 24-28, 2003

Whittier, CA

Contact: Bob Feliciano,  
bfeliciano@riohondo.edu  
or (562) 692-0921

# **COPS**

## Advancing Community Policing in America

The Office of Community Oriented Policing Services (COPS) is the Federal office responsible for advancing community policing, including funding the hiring of additional community policing officers and funding innovative community policing initiatives in agencies throughout America.

### **Hiring Officers**

The Universal Hiring Program provides grants to help law enforcement agencies hire community policing officers. The COPS in Schools program provides grants for the hiring of officers to fight crime and disorder in and around schools.

### **Technology and Civilians**

The COPS Office provides funds to acquire new technologies and equipment, and for the hiring of civilians for administrative tasks. This allows more law enforcement officers to spend their time on the streets pounding the pavement instead of pounding the keyboard in station houses.

### **Promoting Innovation**

The COPS Office provides grants to promote innovative approaches to preventing and solving crime, reducing fear of crime and increasing trust between law enforcement agencies and the communities they serve. Following are a few examples:

- The Tribal Resources Grant Program provides funds to Indian tribes to enhance their law enforcement infrastructures and increase community policing efforts.
- Domestic Violence grants assist communities to fight domestic violence through community policing.
- The Justice Based After-School Program supports police led after-school programs to prevent juvenile crime and victimization.
- The Methamphetamine Initiative targets the production and distribution of "meth" in urban and rural America.
- The School-Based Partnership Program assists hundreds of communities and police to fight school crime.

### **Training and Technical Assistance**

The COPS Office is dedicated to providing the free training and technical assistance necessary to assist agencies, officers and communities to implement and sustain community policing, through a nationwide network of regional community policing institutes and in partnership with the Community Policing Consortium.



For more information on the COPS Office or to receive information regarding funding opportunities visit our newly upgraded website at:

[www.cops.usdoj.gov](http://www.cops.usdoj.gov)

or call the DOJ Response Center at (800) 421-6770

# ABOUT THE POLICE FOUNDATION

The Police Foundation is a private, independent, not-for-profit organization dedicated to supporting innovation and improvement in policing through its research, technical assistance, and communications programs. Established in 1970, the foundation has conducted seminal research in police behavior, policy, and procedure, and works to transfer to local agencies the best new information about practices for dealing effectively with a range of important police operational and administrative concerns. Motivating all of the foundation's efforts is the goal of efficient, humane policing that operates within the framework of democratic principles and the highest ideals of the nation.

## OFFICE OF RESEARCH

D. Kim Rossmo, PhD  
*Director of Research*

Rachel Boba, PhD  
*Director, Crime Mapping Laboratory*

Justin Ready, MA  
*Senior Research Associate*

David Weisburd, PhD  
*Senior Fellow*

Edwin E. Hamilton, MA  
*Senior Research Analyst*

Mary Velasco, BS  
*Research Associate*

Vanessa Ruvalcaba, BA  
*Research Assistant*

Greg Jones, MA  
*Graduate Research Intern*

## BOARD OF DIRECTORS

*Chairman*  
William G. Milliken

*President*  
Hubert Williams

David Cole

Wade Henderson

William H. Hudnut III

W. Walter Menninger

Laurie O. Robinson

Henry Ruth

Stanley K. Sheinbaum

Maria Vizcarrondo-DeSoto

Alfred A. Slocum

Kathryn J. Whitmire



**1201 Connecticut Avenue, NW, Suite 200, Washington, DC 20036**  
**(202) 833-1460 ♦ Fax (202) 659-9149 ♦ e-mail: [pfinfo@policefoundation.org](mailto:pfinfo@policefoundation.org)**  
**[www.policefoundation.org](http://www.policefoundation.org)**

This project was supported by cooperative agreement #2001-CK-WX-K059 awarded by the Office of Community Oriented Policing Services, US Department of Justice. Points of view or opinions contained in this document are those of the authors and do not necessarily represent the official position or policies of the US Department of Justice.